

Leather and Alternative Surfaces: The Season Ahead

By Mr. Sushant Kapil

Spring/Summer 2027 reflects a growing shift in footwear and accessory materials, where responsibility meets expression. Designers are increasingly balancing durability with emotional appeal, drawing inspiration from heritage textures, nature-led motifs, and crafted finishes. The season reflects a growing preference for materials that not only last longer but also communicate story, comfort, and individuality.

Seasonal Direction: A Year-Round Design Narrative

S/S 27 offers brands and designers the chance to build material stories that can remain relevant across seasons. Rather than being a micro trend, the focus moves toward continuity and clarity—helping consumers feel confident in their choices. This long-term approach supports evolving design narratives that strengthen brand identity and material trust.

Leather and Non-Leather Innovations

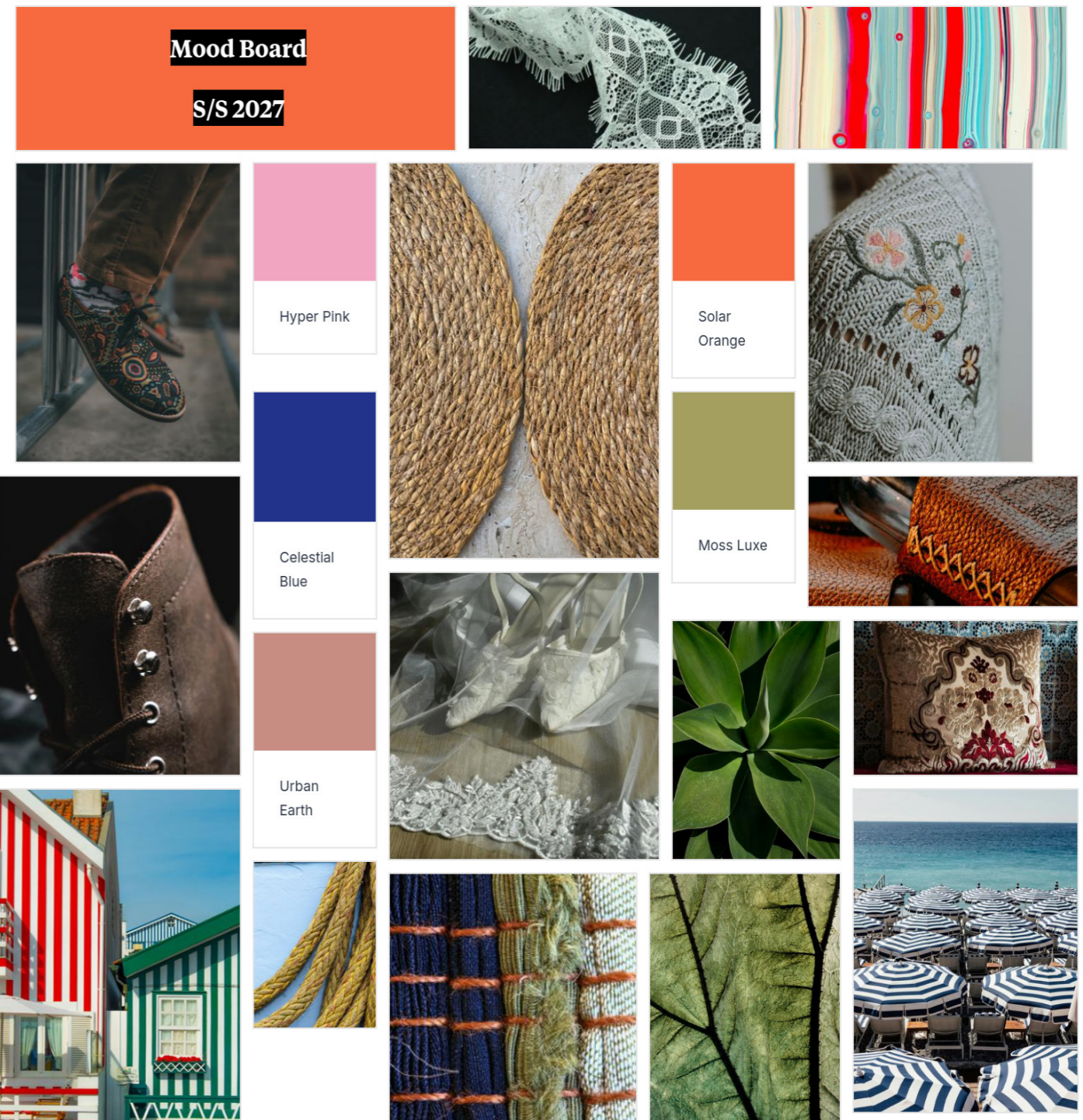
Materials and surface finishes are expected to play a decisive role in deepening the relationship between product and user. Visual richness, tactile feel, and subtle playfulness will work together to create engaging sensory experiences.

Designers are encouraged to explore contrasting material pairings such as smooth versus textured, matte versus shine mainly to reflect the season’s broader theme of interconnectedness.

Archival revival continues to be influential, with “storytelling” encouraging designers to reinterpret vintage materials and traditional finishes through a modern lens. At the same time, rising sustainability standards mean that responsible material selection is no longer a choice but a necessity. Traceable leathers, recycled and bio-based alternatives certified under widely recognised global standards, and environmentally mindful production processes are becoming essential industry benchmarks. Progress in this area is increasingly driven by collaboration between brands, suppliers, and manufacturers, reinforcing shared responsibility and long-term innovation.

Material & Design Strategies for S/S 27

- Endurable Materials**
 Invest in premium, responsibly sourced leather, synthetics, and plant-based alternatives to build timeless, sustainable collections.
- Coastal Feels**
 Nautical-inspired stripes and linear graphics bring a relaxed, resort-ready mood to footwear and accessories.
- Lived-In Leather**
 Worn, cracked, and aged surfaces highlight durability while celebrating imperfection and character over time.
- Artisan Impressions**
 Embossed textures introduce handcrafted depth, reflecting decorative and traditional craftsmanship.
- Home to Wardrobe**
 Interior-inspired textiles—such as upholstery weaves and soft furnishings—transition into fashion-forward material applications.
- Nature Bloom**
 Floral references inform appliqués and surface details, drawing inspiration from meadow landscapes and organic forms.
- Timeworn Sheen**
 Metallic finishes evolve into muted, antique tones with a spiritual or heritage-inspired feel.



- Handcrafted Naturals**
 Regenerative materials combined with artisanal techniques reinforce authenticity and tactile richness.
- Reimagined Animal Textures**
 Shiny snakeskin effects refresh classic animal patterns with a contemporary edge.
- Skin-Comfort Surfaces**
 Soft, skin-like textures focus on comfort, enhancing wearability and sensory appeal.

For S/S 2027, materials speak with intentions, balancing responsibility, longevity, and expressions to create designs that feel meaningful in a changing the world.

This article is based on independent analysis informed by global trend research and industry observation.



Mr. Sushant Kapil Jr.
 Faculty
 School of Footwear Design
 FDDI Noida